

COUNCIL ON WATERSHED MANAGEMENT

Reduce flood risk
and improve
floodplain
management
across the state

The Council on Watershed Management, created by Executive Order JBE 2018-16 on 5/29/18, is composed of the Secretaries and Directors of five state agencies:

- Office of Community Development
- Coastal Protection and Restoration Authority
- Governor's Office of Homeland Security and Emergency Preparedness
- Department of Transportation and Development
- Louisiana Department of Wildlife and Fisheries



July 13, 2018

STATEWIDE WATERSHED BASED FLOODPLAIN MANAGEMENT PROGRAM

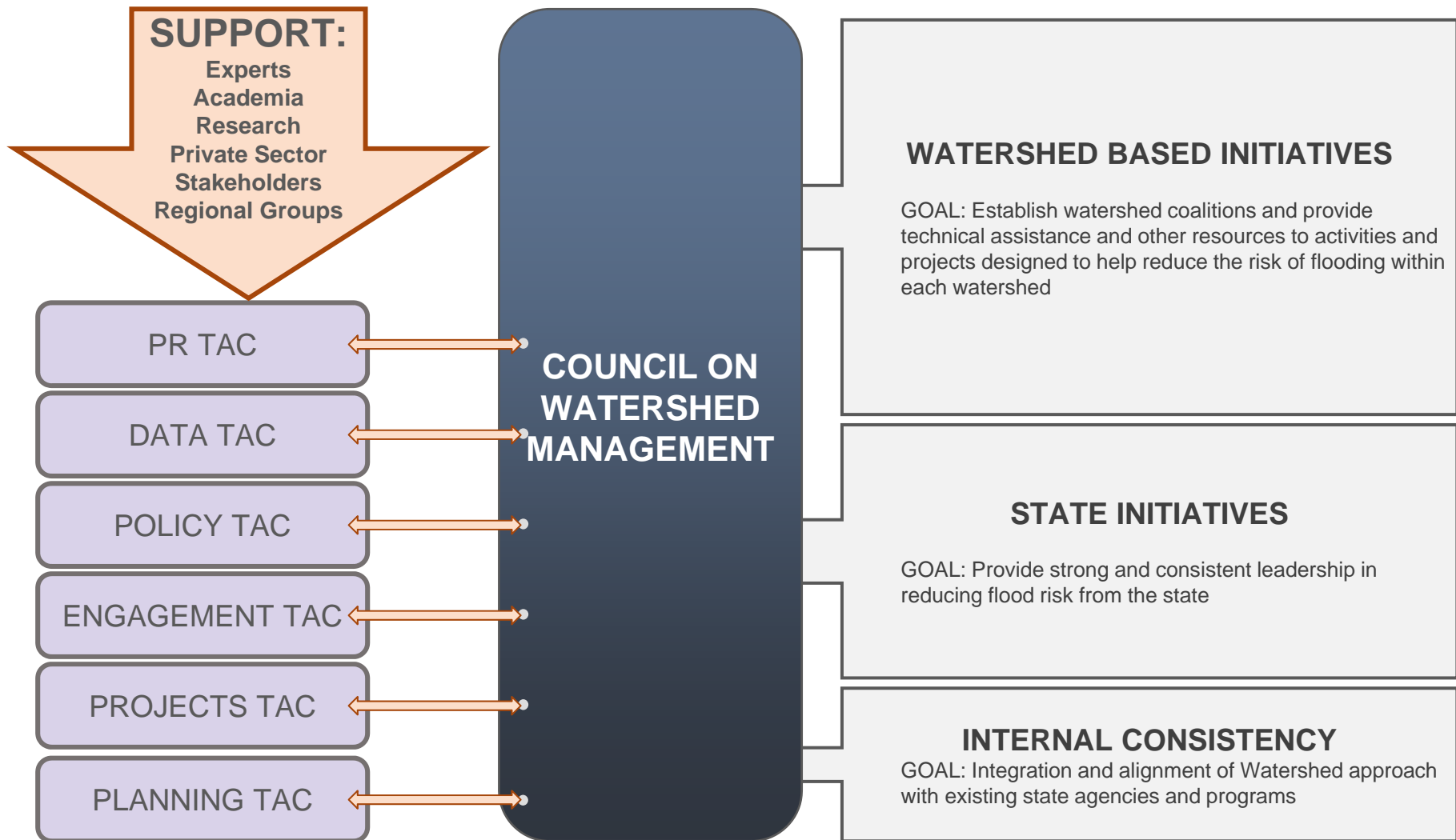
Reduce flood risk and
improve floodplain
management across the
state

PROGRAM GOALS

- Provide consistent, up-to-date, and high-quality data
- Engage in meaningful and effective outreach with stakeholders at all levels,
- Lead local floodplain management by defining performance standards and best practices
- Maximize effectiveness by leveraging funding
- Build capacity and capability in local and state government entities
- Assist state and local entities in watershed-based floodplain management

PROGRAM DEVELOPMENT PROCESS

- The Council on Watershed Management will rely on recommendations from experts and stakeholders to help shape the development of the Watershed Initiative



Role of TACs

- Make sure the Council has the best information to make decisions
- Provide transparency into the decision making process

Initial TACs

- Data
- Engagement
- Projects
- Policy
- Planning
- Public Relations
- Others as needed

Role of Support Entities

- Make sure the TACs have expertise and perspectives needed to make sound recommendations to the Council
- Provide transparency into the decision making process

Support Entities Will Include Stakeholders Such As:

- **Experts** (e.g. USGS, USACE, FEMA)
- **Academia** (e.g. LSU, ULL, ULM)
- **Research** (e.g. TWIG, CPEX)
- **Professional Groups** (e.g. Industry Associations, Association of Levee Boards of Louisiana)
- **Regional Groups** (e.g. Acadiana Planning Commission, Local Planning and Zoning Depts., Police Jury Assn.,)

UPDATES

- Council has met and continues to make progress with program development and agency coordination
- Working Group has been meeting and is continuing to make progress
 - Developed guidelines for how the TACs, the Working Group and the Council will communicate and interact
 - Continue with staffing proposals at each of the agencies
 - Support existing programs and engagement efforts
- TAC processes have been established
- HUD Action plan not yet released
- Developing a branding strategy to build recognition and program awareness

MONITORING MAPPING MODELING WATERSHEDS

- River Gauges
- TopoBathy and Surveys
- H&H Models
- Data Portal

COST SHARE ASSISTANCE

- HMGP Cost Share
- Underfunded HMGP
- Cost Share for other Eligible Programs

WATERSHED- BASED PROJECTS AND PROGRAMS

- Planning, Policy and Technical Assistance and Capacity Building
- Watershed Improvements and Waterway Restoration
- Strategic Land Acquisition and Flood Easements
- Economic Development

LARGE SCALE PROJECTS and PROGRAMS

- State Planning
- State Identified Projects
- Voluntary Relocation and Large Area Buyouts

9 months

6 months

3 months

- Initial TACs established
- Engagement TAC seeks input from stakeholders
- Project TAC proposes initial project evaluation criteria
- Data TAC proposes initial data and model standards and recommendations
- Initial proposed program metrics of success

- Projects*
- Continue engagement and coalition building across the state
- Initial recommendations for watershed- based plans
- Data gap analysis
- Program publications initiated
- Initial website launch

*depends on Federal Register Notice

- Continue Program development and refinement
- Continue engagement and coalition building
- Watershed planning in progress at local level

NEXT STEPS